

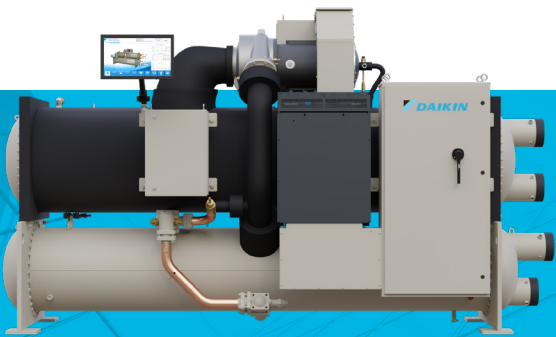


In-Stock Chillers Ready to Ship

The right chiller...right now.

A great selection of chillers is stocked and ready for immediate shipment — including industry leading Magnitude® magnetic bearing water-cooled chillers and Pathfinder® air-cooled chillers.

- Compact footprint for easy installation in new or replacement projects
- Select from multiple options and fast, flexible modifications to suit your application
- Industry leading efficiencies
- Open Choices™ feature for easy integration with your choice of building automation systems



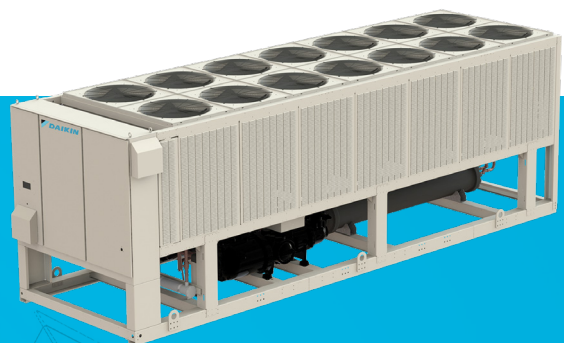
Water-cooled Chillers

Magnitude® Magnetic Bearing Chillers

- WMC 100 - 400 tons; WME 400 - 600 tons
- World class full and part load efficiencies
- Ideal for "green" projects and retrofits

WGZ Scroll Compressor Chillers

- WGZ 30 - 200 tons
- Wide operating range - including ice duty



Air-cooled Chillers

Pathfinder® Screw Compressor Chillers

- AWV 175 - 350 tons
- Variable VR technology for optimized efficiency at all operating conditions

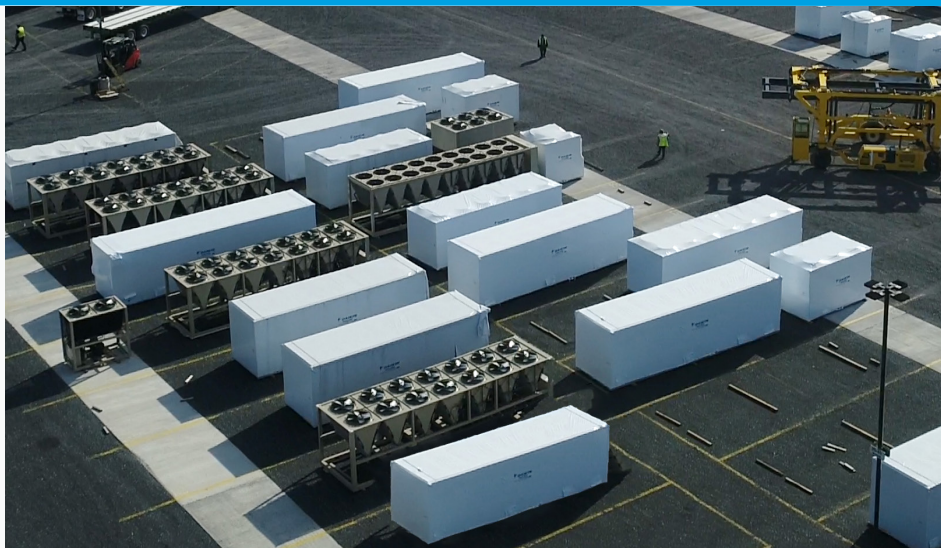
Trailblazer® Scroll Compressor Chillers

- AGZ 20 - 240 tons
- Quiet, efficient, reliable

LEARN MORE AT **DAIKINAPPLIED.COM**

CHILLERS IN STOCK AND READY TO SHIP

**ALL OF THE MOST
POPULAR CHILLER
MODELS, SIZES, AND
OPTIONS ARE STOCKED
AND READY FOR
IMMEDIATE SHIPMENT**



MORE DAIKIN APPLIED PRODUCTS AVAILABLE FROM STOCK OR FOR QUICK SHIP:



Vision® Air Handlers
900 to 100,000 cfm



Skyline® Air Handlers
900 to 65,000 cfm



PreciseLine® Indoor Air Handlers
600 to 5,000 cfm



Maverick® I Rooftops
3 to 25 tons



Maverick® II Rooftops
15 to 50 tons



Single Circuit Condensing Units
6 to 20 tons



Water Source Heat Pumps
½ to 25 tons



Fan Coils
200 to 3,000 cfm



Coils



CONTACT YOUR LOCAL DAIKIN APPLIED REPRESENTATIVE FOR MORE
INFORMATION ON OUR STOCK EQUIPMENT, READY TO SHIP TO YOUR JOB
SITE. TO FIND A DAIKIN APPLIED REPRESENTATIVE NEAR YOU, VISIT

DAIKINAPPLIED.COM.